

Awesome Splash Water Playground Theme Park Rides 13.5m*9.5m*7m

Our Product Introduction

for more products please visit us on waterparksequipments.com

Basic Information

- Certification: ISO9001



Product Specification

- Model NO.: LANCHAO-WH04
- Allowable Passenger: <10
- Customized: Customized
- Condition: New
- Size: Customized
- Warranty: 12 Months
- Working Life: More Than 12 Years
- Product Name: Fiberglass Water House Playground For Water Park
- Transport Package: Plastic Foam, Cotton Or Wooden Case Etc.
- Specification: Customized
- Trademark: LANCHAO
- Origin: China
- HS Code: 9506999000
- Supply Ability: 10 Sets Per Months



More Images



Product Description

Product Description

Hot Sale Fiberglass Water House Slide for Swimming Pool

Product Description

Product	Fiberglass Water House Playground for Water Park with High Quality
Brand	Lanchao
Size	Height : 7m
Specification	13.5m*9.5m*7m
Water slides	2 opened slides, 1 closed spiral slide
Power	7.5KW
Color	Refer to the color chart
Material	High quality Fiberglass, hot-galvanized steel with top quality, stainless-steel structure
Resin	FUTIAN
Gel coat	DSM
Warranty	12 months free warranty
Working life	More than 12 years
Installation	Available
Lead time	As MOQ is 1 set, 30~40 days according to the contract.
Package	Usually with carton, wooden frame and details according to the contract.
Suitable for	Theme park, Water amusement Park, Swimming Pool, family pool, holiday resort, etc
Advantages	a. Anti-UV/Anti-static c. Professional & high quality
Details	b. Fade/erosion/oxidation Resistant d. Environmental friendly
	According to the contract

Detailed Images

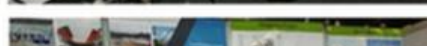


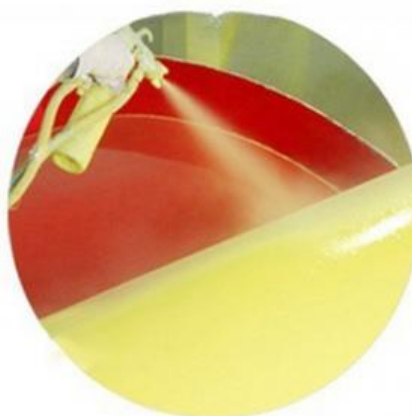
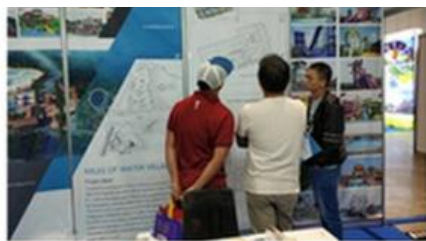




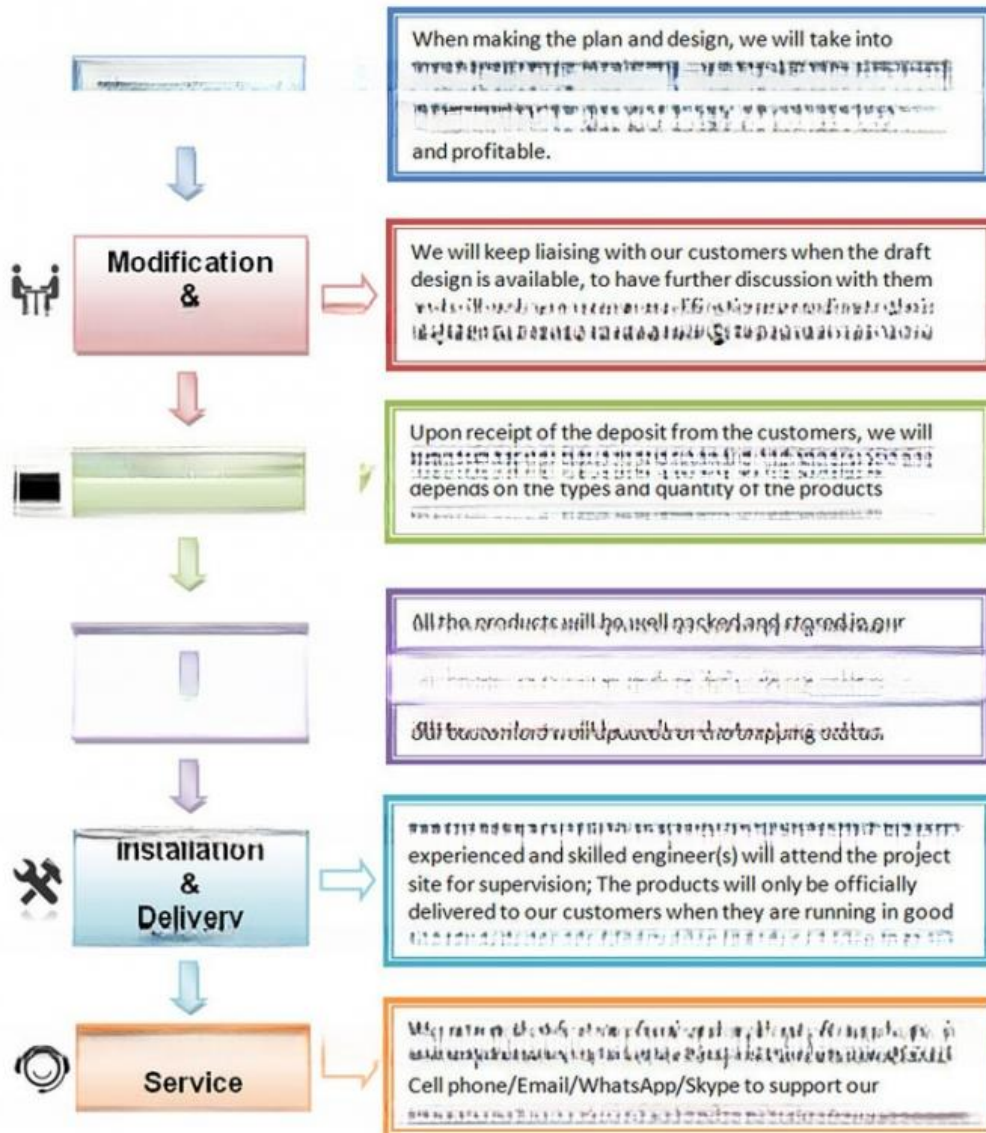
Company Introduction

Lanchao company was established in 2010, the founder and core team members have been specializing in this field for over 10 years (since 2003). We have gained high reputation from our customers home and abroad by keeping providing them the excellent one-stop solution for water park: planning, design, production, delivery, installation and after-sale support etc.





Using the high-performance material of Eiber Reinforced Plastics/EBP featured in
Employed the special gel-coat on the slide surface with the function of high-mech

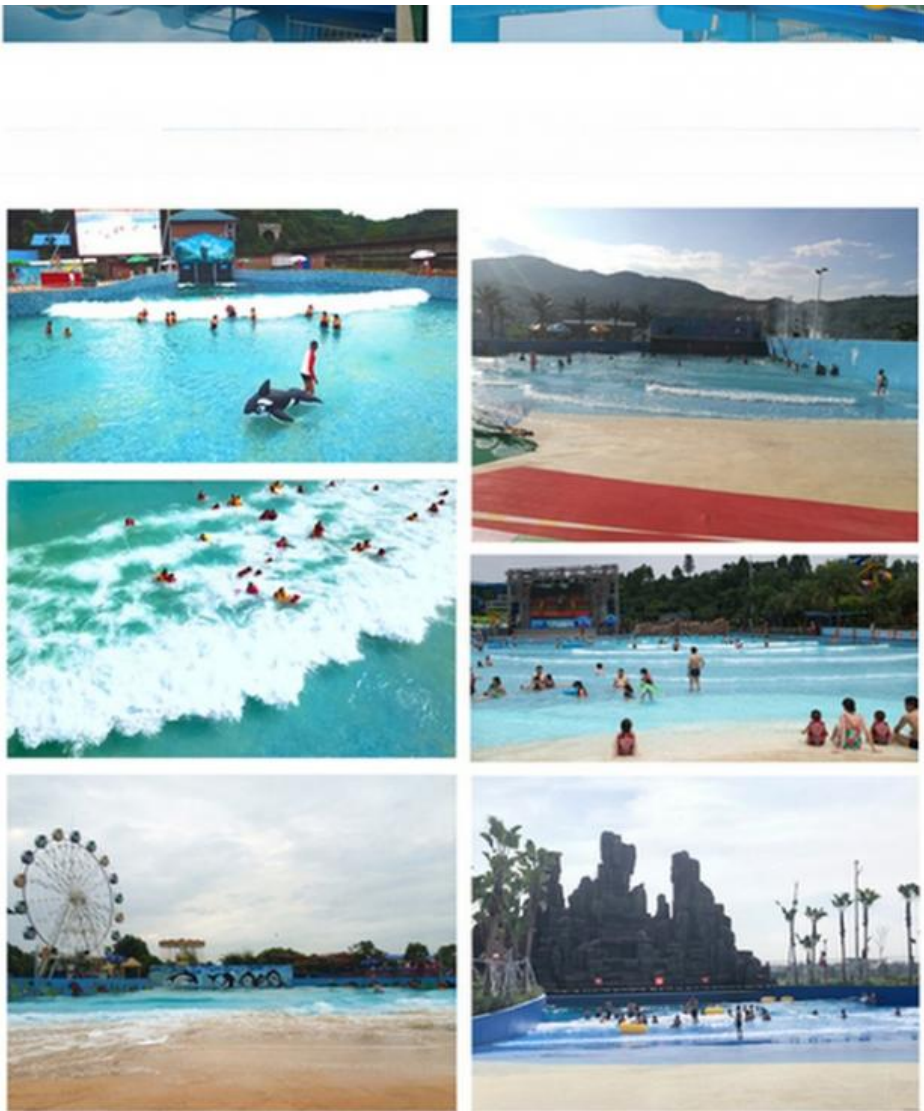


Water Park Projects



Related Products





Water House





Water Spray Toys



Our Advantages

- ◆ **Safe:** High quality raw material, Eco-friendly, International Standard.
- ◆ **Comfortable:** Focus on customer experience, humanization design.
- ◆ **Artistic:** We keep trying our best to make water park as an combination of artwork, fun and interaction.
- ◆ **Competitive:** Lower the cost by good management of production line; Keep improving and making new products.
- ◆ **Fast:** It's our principle that we shall meet the needs from our customers as soon as possible. We have 24 hours online service to support our customers.

Should there be any queries, please feel free to contact us.



Meizhou Lanchao Water Park Equipment Manufacturing Co., Ltd.



+86 15820225735



vincent@gzlanchao.com



waterpark equipments.com

401, Block B, Shenghui Building, No.23, Shinan Rd., Qiaonan Street, Panyu District, Guangzhou, Guangdong, China.