

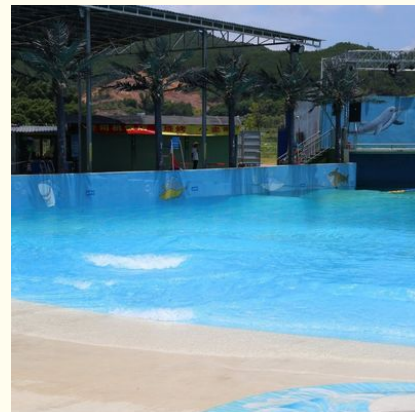
## ISO9001 0.3-1.2m Height Big Surf Wave Pool Water Park Long Working Life

Our Product Introduction

for more products please visit us on [waterparksequipments.com](http://waterparksequipments.com)

### Basic Information

- Certification: ISO9001, SGS



### Product Specification

- Model NO.: LANCHAO-WP02
- Allowable Passenger: <10
- Customized: Customized
- Condition: New
- Size: Customized
- Warranty: 12 Months
- Working Life: More Than 12 Years
- Product Name: Blower Wave Pool Machine For Water Amusement Park
- Transport Package: Plastic Foam, Cotton Or Wooden Case Etc.
- Specification: Customized
- Trademark: LANCHAO
- Origin: China
- HS Code: 9506999000
- Supply Ability: 10 Sets Per Months



### More Images



## Product Description

### Product Description

### Blower Wave Pool Machine for Water Amusement Park

#### Product Description

|                      |   |  |                                     |
|----------------------|---|--|-------------------------------------|
| <b>Product</b>       | High Quality Blower Wave Pool Machine for Water Park                                      |  |                                     |
| <b>Brand</b>         | Lanchao   |  |                                     |
| <b>Size</b>          | Height of wave: 0.3-1.2m, max=1.5m  |  |                                     |
| <b>Specification</b> | Depth of the pool: 0-1.8m   |  |                                     |
|                      | Waving area: 500-700m <sup>2</sup> /machine   |  |                                     |
|                      | Length of wave: 2-10m   |  |                                     |
| <b>Type</b>          | Air-operated  |  |                                     |
| <b>Power</b>         | 45kW/machine  |  |                                     |
| <b>Color</b>         | Refer to the color chart  |  |                                     |
| <b>Material</b>      | High quality Fiberglass, hot-galvanized steel with top quality, stainless-steel structure |  |                                     |
| <b>Resin</b>         | FUTIAN  |  |                                     |
| <b>Gel coat</b>      | DSM   |  |                                     |
| <b>Warranty</b>      | 12 months free warranty   |  |                                     |
| <b>Working life</b>  | More than 12 years  |  |                                     |
| <b>Installation</b>  | Available   |  |                                     |
| <b>Lead time</b>     | As MOQ is 1 set, 30~40 days according to the contract.                                    |  |                                     |
| <b>Package</b>       | Usually with carton, wooden frame and details according to the contract.                  |  |                                     |
| <b>Suitable for</b>  | Theme park, Water amusement Park, Swimming Pool, family pool, holiday resort, etc         |  |                                     |
| <b>Advantages</b>    | a. Anti-UV/Anti-static  |  | b. Fade/erosion/oxidation Resistant |
|                      | c. Professional & high quality  |  | d. Environmental friendly           |
| <b>Details</b>       | According to the contract   |  |                                     |

#### Detailed Images



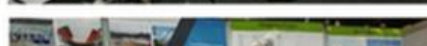




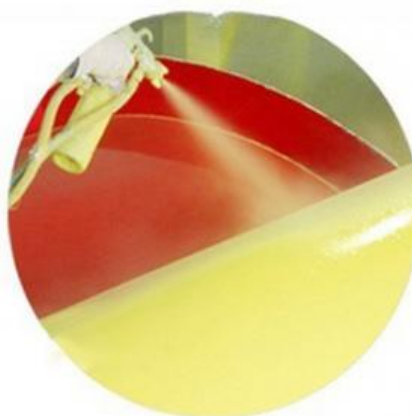
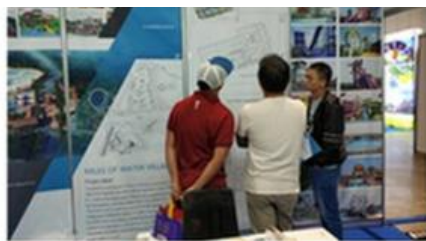


## Company Introduction

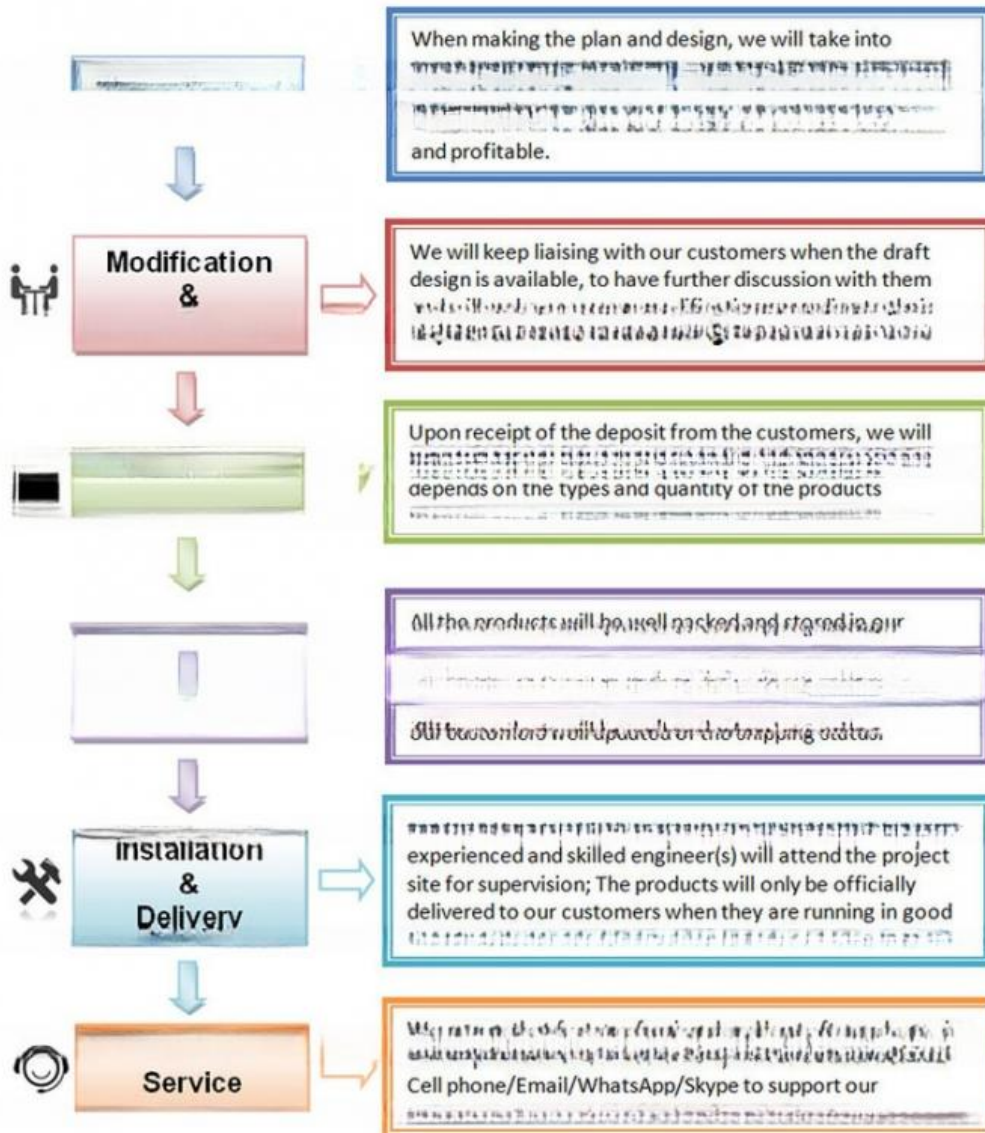
Lanchao company was established in 2010, the founder and core team members have been specializing in this field for over 10 years (since 2003). We have gained high reputation from our customers home and abroad by keeping providing them the excellent one-stop solution for water park: planning, design, production, delivery, installation and after-sale support etc.







Using the high-performance material of Eiber Reinforced Plastics/FRP featured in  
Employed the special gel-coat on the slide surface with the function of high-mech





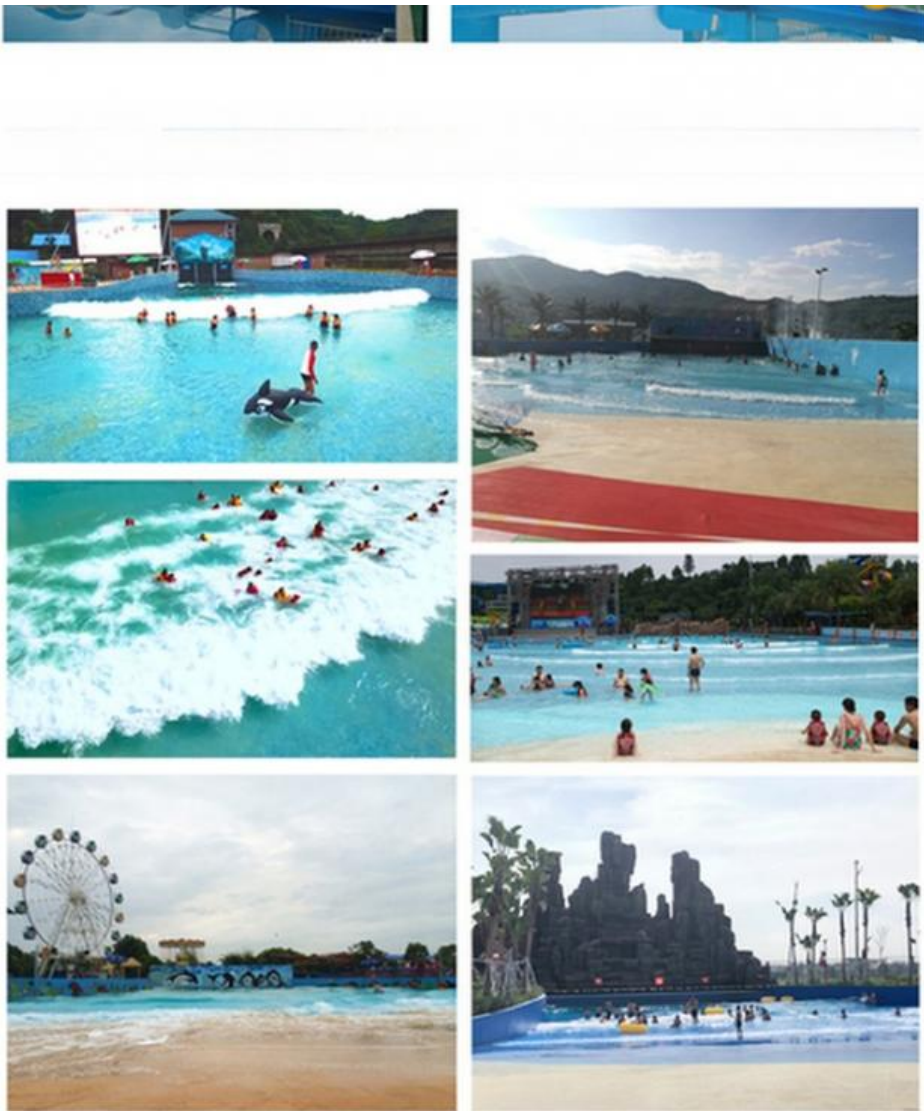
# Water Park Projects



## Related Products







## Water House







# Water Spray Toys



## Our Advantages

- ◆ **Safe:** High quality raw material, Eco-friendly, International Standard.
- ◆ **Comfortable:** Focus on customer experience, humanization design.
- ◆ **Artistic:** We keep trying our best to make water park as an combination of artwork, fun and interaction.
- ◆ **Competitive:** Lower the cost by good management of production line; Keep improving and making new products.
- ◆ **Fast:** It's our principle that we shall meet the needs from our customers as soon as possible. We have 24 hours online service to support our customers.

**Should there be any queries, please feel free to contact us.**



**Meizhou Lanchao Water Park Equipment Manufacturing Co., Ltd.**



+86 15820225735



vincent@gzlanchao.com



waterparksequipments.com

401, Block B, Shenghui Building, No.23, Shinan Rd., Qiaonan Street, Panyu District, Guangzhou, Guangdong, China.