

ISO9001 Certified Theme Tsunami Wave Pool Equipment For Swimming Pool

Our Product Introduction

for more products please visit us on waterparksequipments.com

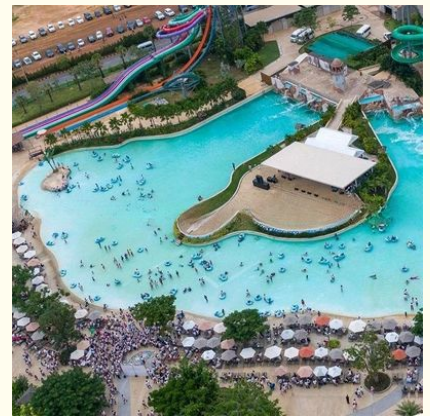
Basic Information

- Certification: ISO9001

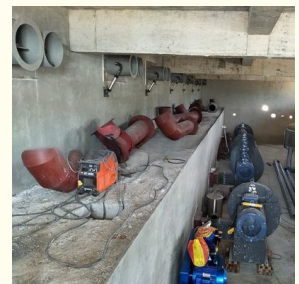


Product Specification

- Model NO.: LANCHAO-WP01
- Type: Water Park
- Material: Fiberglass, Anti-Rust Steel
- Max Capacity: >500kg
- Age: >18 Years
- Suitable For: Amusement Park
- Color: Colourful
- Allowable Passenger: <10
- Customized: Customized
- Condition: New
- Size: Customized
- Warranty: 12 Months
- Working Life: More Than 12 Years
- Product Name: Water Amusement Park Surf Wave Pool Equipment



More Images



Product Description

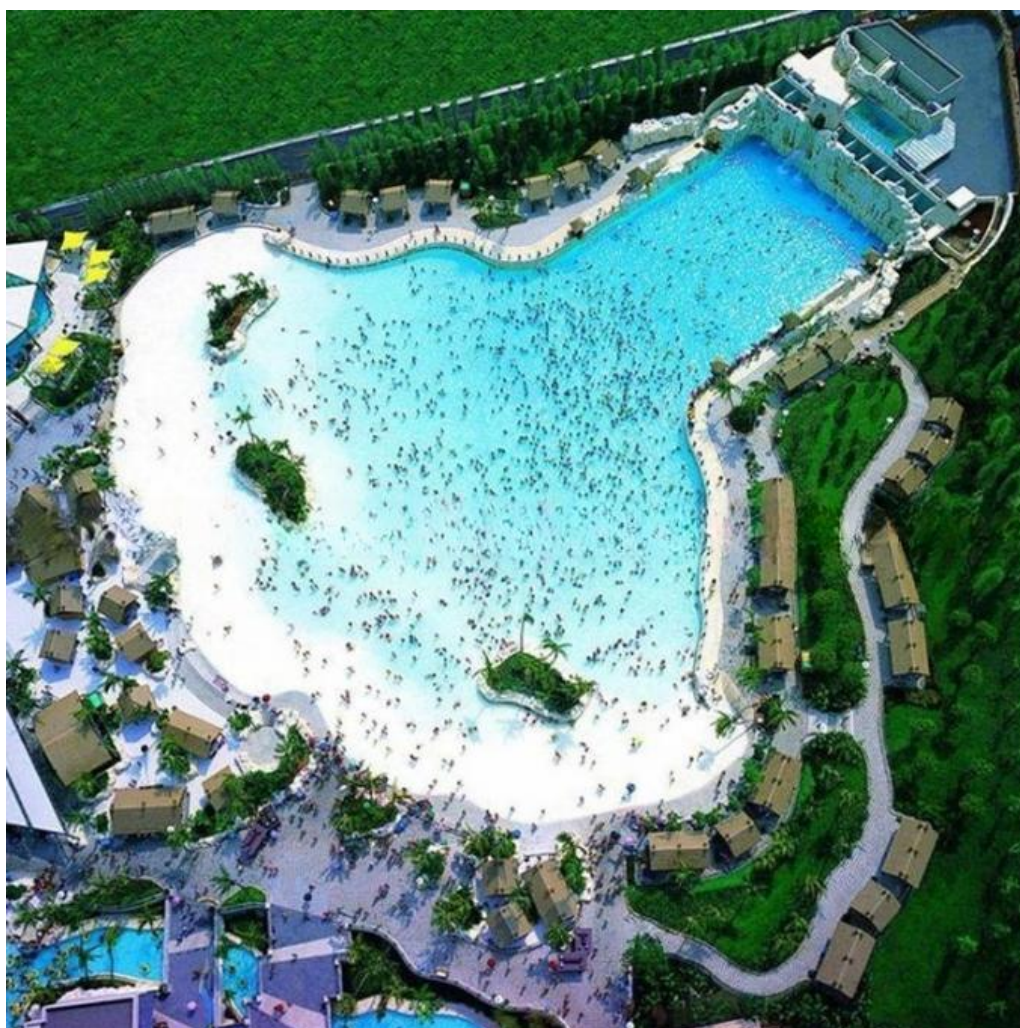
Product Description

Theme Water Park Equipment Swimming Wave Pool Machine

Product Description

Product	Water Amusement Park Surf Wave Pool Equipment		
Brand	Lanchao		
Size	Height of wave: 2m		
Specification	Depth of the pool: 0-2.1m		
	Waving area: 800-1000m ² /machine		
	Length of wave: 5-15m, every 3-5mins per time		
Type	Vacuum		
Power	55KW/machine		
Color	Refer to the color chart		
Material	High quality Fiberglass, hot-galvanized steel with top quality, stainless-steel structure		
Resin	FUTIAN		
Gel coat	DSM		
Warranty	12 months free warranty		
Working life	More than 12 years		
Installation	Available		
Lead time	As MOQ is 1 set, 30~40 days according to the contract.		
Package	Usually with carton, wooden frame and details according to the contract.		
Suitable for	Theme park, Water amusement Park, Swimming Pool, family pool, holiday resort, etc		
Advantages	a. Anti-UV/Anti-static		b. Fade/erosion/oxidation Resistant
	c. Professional & high quality		d. Environmental friendly
Details	According to the contract		

Detailed Images



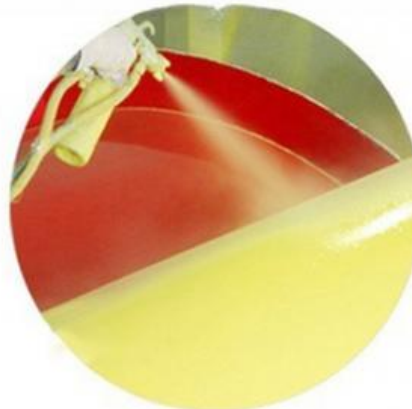
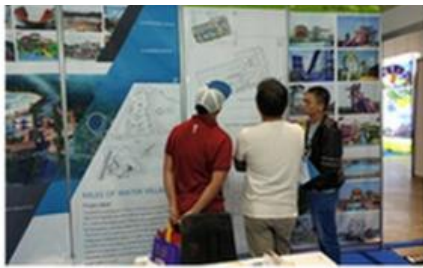




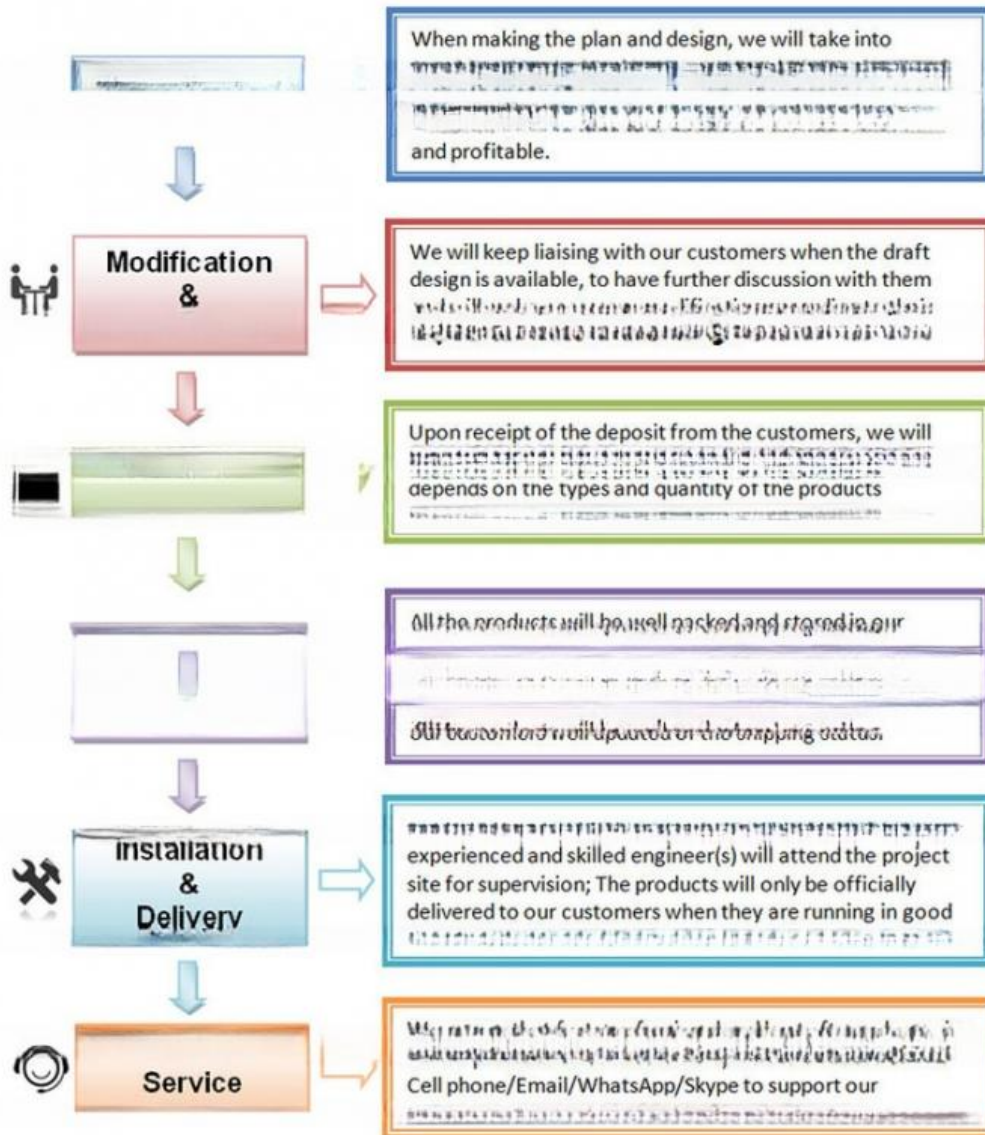
Company Introduction

Lanchao company was established in 2010, the founder and core team members have been specializing in this field for over 10 years (since 2003). We have gained high reputation from our customers home and abroad by keeping providing them the excellent one-stop solution for water park: planning, design, production, delivery, installation and after-sale support etc.





Using the high-performance material of Eiber Reinforced Plastics/ERP featured in
Employed the special gel-coat on the slide surface with the function of high-mech



Water Park Projects



Related Products





Water House





Water Spray Toys



Our Advantages

- ◆ **Safe:** High quality raw material, Eco-friendly, International Standard.
- ◆ **Comfortable:** Focus on customer experience, humanization design.
- ◆ **Artistic:** We keep trying our best to make water park as an combination of artwork, fun and interaction.
- ◆ **Competitive:** Lower the cost by good management of production line; Keep improving and making new products.
- ◆ **Fast:** It's our principle that we shall meet the needs from our customers as soon as possible. We have 24 hours online service to support our customers.

Should there be any queries, please feel free to contact us.



Meizhou Lanchao Water Park Equipment Manufacturing Co., Ltd.



+86 15820225735



vincent@gzlancho.com



waterpark equipments.com

401, Block B, Shenghui Building, No.23, Shinan Rd., Qiaonan Street, Panyu District, Guangzhou, Guangdong, China.